

CORNELDER HOLDING B.V.

Entrepreneurship, sustainability, innovation and a clear focus.

WWW.CORNELDERHOLDING.COM



A PERSONAL WORD FROM OUR CEO

“

A combination of like-minded parties will lead to results that exceed expectations. AHV's ambition to double its annual turnover perfectly fits the flexibility and pragmatism of our company.

AHV ensures (inter)national growth; we ensure the perfect delivery based on the wishes of both AHV and its stakeholders, with local hubs where necessary. Good results come through cooperation and a clear focus on your strengths.

We look forward to a constructive, long-term partnership!

”

George Broeders

Managing Director

ABOUT US

Cornelder Holding B.V. is a family business with more than 200 years of history. Founded in 1814, the main activity was the provision of services to ship owners and maritime agents in the port of Rotterdam. The implementation of the logistics department ensured a considerable growth of the company.

Initially, Cornelder made a strong organic growth but later it was further consolidated with acquisitions and joint ventures. For Cornelder, Rotterdam was the starting point but the focus became increasingly over seas. First mainly in Europe, but later on Africa and Asia as well.

The current Cornelder Holding interests are reduced to four main activities:

- **as a stevedore and a terminal operator (Cornelder Corporation Mozambique)**
- **as a shipbroker and a logistics player (Royal Burger Group);**
- **as an investor in startups and innovative product development (Cornelder Participations);**
- **as an investor (majority or minority shareholder) in innovative, creative companies with mostly a link to the base of our maritime and logistics expertise in Europe and in East Africa**



OUR VALUES



Entrepreneurship

We invest in innovative and creative start-ups that have a link to the maritime and logistic sector.



Sustainability

We contribute through (local) employment, education and investments in local projects.



Innovation

We bring innovation to different industries.



Clear focus

We have a long-term view and value our partners as if they are family.



OUR VISION

Our way of thinking

We always find a new way of thinking. We have a mentality of being proactive, practical and simply start doing things.

We believe in long term partnerships, disruptive thinkers and have a long-term view. We take care of our partners, employees and stakeholders to reach a long term sustainable future for our companies.

This is how we survived 200+ years and how we will survive in the next 200+ years.



OUR NUMBERS

\$500m

revenue

\$200m

investments

5th

generation family business

800+ FTE

worldwide

4

countries

2

Greenfield initiatives

175.000

TEU

1m

Packages to end user





BURGER
WAREHOUSING



BURGER
MARINE FORWARDING

IN A NUTSHELL



FAMILY COMPANY WITH 200+ YEARS OF HISTORY

Founded in 1814 in Rotterdam (The Netherlands); fifth generation company



RENOWNED ONE-STOP-SHOP

Serves all her clients' maritime and logistic needs worldwide



STRONG VALUES

Focus on long term success, community and loyalty towards staff



OUR MISSION

Creating synergies between parties, based on our core values



INVESTING IN THE FUTURE

We invest in innovative and creative start-ups linked to maritime & logistics



LEARN MORE



BURGER LOGISTIC SERVICES



INTRODUCING...

BURGER LOGISTIC SERVICES

100% owned by Cornelder Holding B.V.

Founded in 1774 and specialized since 1814 in tailor-made solutions for your transport needs. We believe in partnerships with both our suppliers and our partners for a better collaboration and higher satisfaction.

Part of Royal Burger Group

We focus on freight related services for containers, general cargo, ro-ro and cargo projects.

Care from A to Z

Since we are a medium-sized company with direct communication lines, we are agile in our way of working. Our logistic experts will advise you based on your specific needs.

ABOUT US



Excelling in everyday life by...

- ... offering more flexibility and specialism – able to grow along with our partners
- ... working data driven by monitoring your supply chain real time
- ... creating tailor-made solutions for our clients, based on their needs
- ... growing partnerships with suppliers for a better collaboration and higher satisfaction rate

TOTAL PACKAGE IN LOGISTICS



INTERNATIONAL EXPEDITIONS BY SEA, AIR OR ROAD



REALTIME DATA DRIVEN INSIGHTS IN CURRENT STATUS AND LOCATION



WAREHOUSING AND DISTRIBUTION



SUPPLY CHAIN MANAGEMENT



(INTER)NATIONAL CONTAINER TRUCKING





SEA FREIGHT



FCL and LCL shipment

Worldwide import/export

- Port to port
- Door to port
- Door to door



AIR FREIGHT



GDP certified

Worldwide import/export

- Airport to airport
- Door to airport
- Door to door



INTERMODAL TRANSPORT



Worldwide import/export

- Full truckloads
- Part loads
- Groupage services
- Rail
- Barge



SPECIAL TRANSPORT & PROJECTS



- Cars, trucks, busses
- Yachts and helicopters
- Construction vehicles
- Greenhouse horticulture
- Breakbulk projects
- Out of gauge



CUSTOMS



Own customs department

- Customs clearance
- Fiscal/tax
- Legalization chamber of commerce
- Certificates of origin
- Temporary export/import/storage



BURGER WAREHOUSING

BURGER WAREHOUSING



The world at your fingertips

Burger Warehousing is a part of the Royal Burger Group. As a group, we have been a reliable logistics partner for decades. Since February 2022, we have expanded our services with Burger Warehousing as part of a multi-year plan that focuses on the wishes of our clients and partners. Thanks to our global coverage and knowledge of the most diverse destinations, we always find the right way to store and transship your products. We attach great importance to reliability, flexibility and speed and work at competitive rates.

ABOUT US



>20.000 m²

Divided over 3 locations

Warehouse

- FTL – FCL
- LTL – LCL
- Crossdocking
- Project load

Value added logistics

- Packaging & repackaging
- Labelling & relabeling
- Palletizing & sealing





IZIPACK



ABOUT US

B2C > B2B

Izipack started with a focus on B2C parcel delivery lockers, but pivoted to nationwide 'Mesh' logistic network for B2B and odd (-sized) shipments.

Global network

We have 20+ hub locations in The Netherlands to guarantee a nationwide coverage. We also have partnerships with parcel carriers in the BENELUX, EU and the rest of the world.

Partnerships

Izipack values partnerships and invests in long-term collaborations, e.g.:

- Bike-delivery/ZE-delivery in Dutch cities;
- PUDO network (2.530 pick-up & drop-off points in NL & BE);
- Fulfillment companies for odd (-sized) parcel delivery



IN A NUTSHELL



FOUNDED IN 2018

By a group of experienced entrepreneurs and world travelers that decided to join forces



ENVIRONMENTAL AND SUSTAINABLE

We work on a short logistics chain to ensure we reduce the emission of CO2 and nitrogen



INNOVATIVE

The initiator of installing parcel lockers at public places so that consumers can decide where and when they want to pick up their package



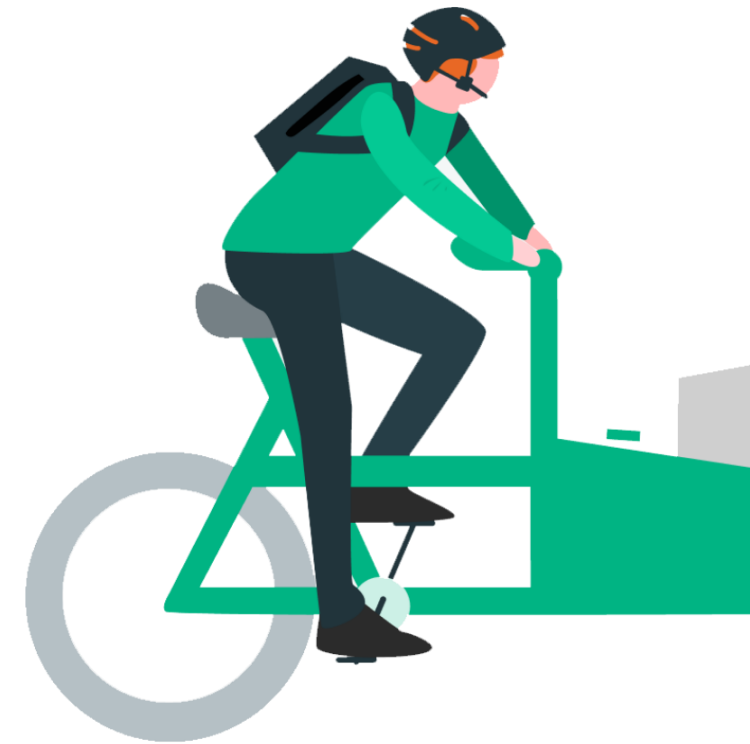
OUR MISSION

Putting customers in control of their packages so they have more time for important matters as well as making a contribution to a sustainable world

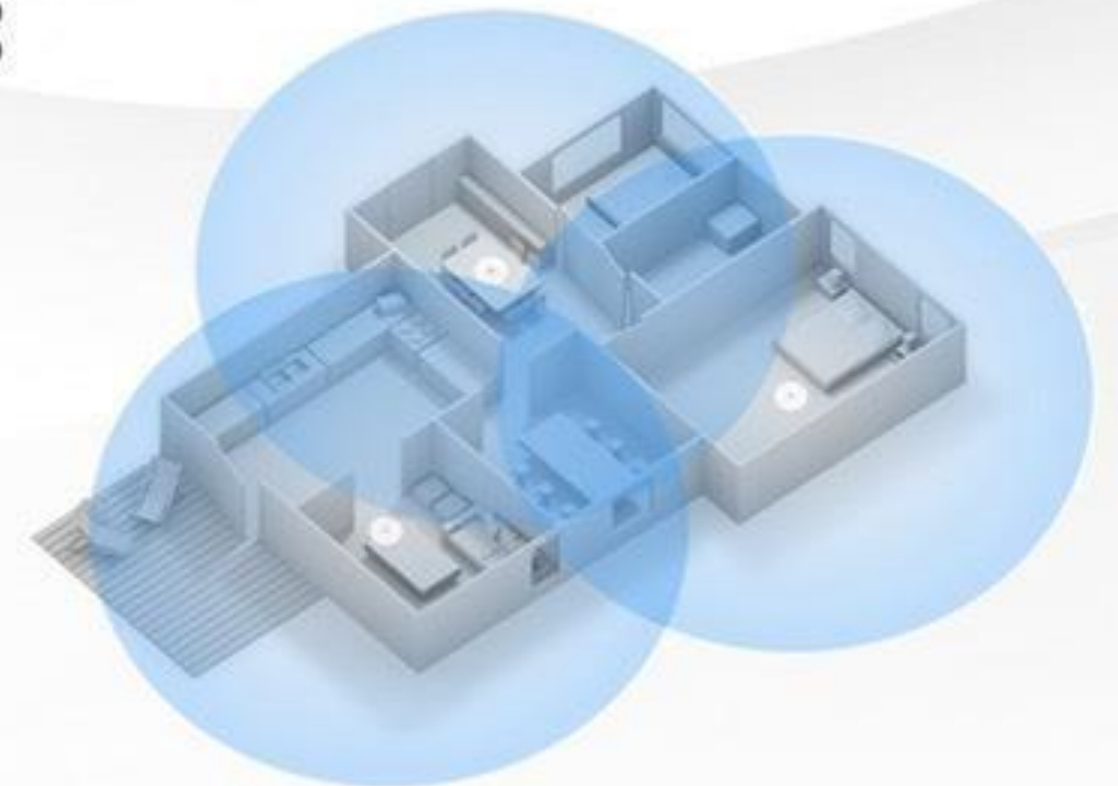


INVESTING IN THE FUTURE

We keep expanding our portfolio by now offering international parcels as well as odd-sized/fragile dispatches



MESH LOGISTIC NETWORK

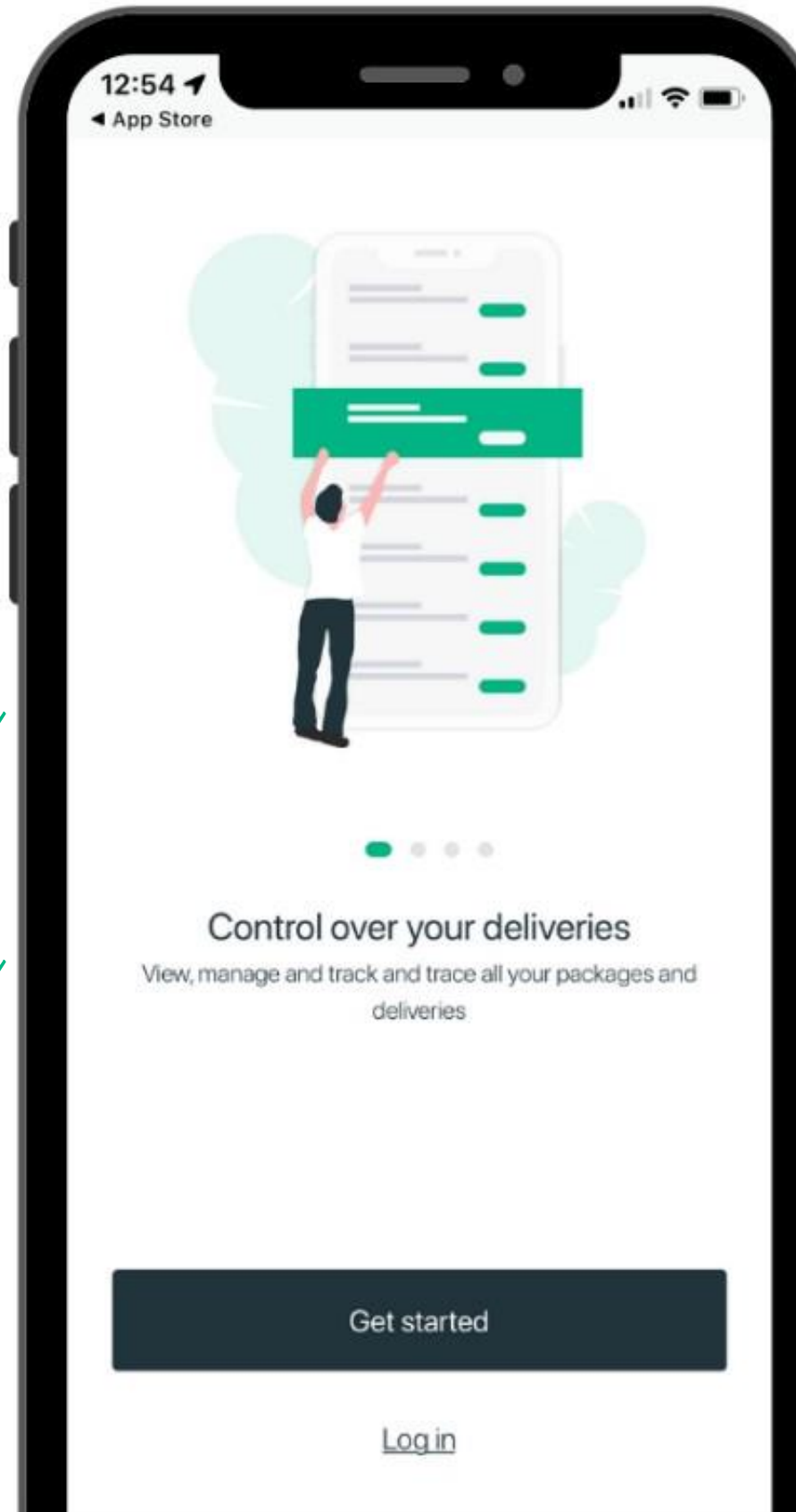


Optimization by data driven algorithms and flexible planning for 20 regional Izihubs

Maximum use of existing routes of partners in regions without established partner service areas

Flexibility to meet customer demands

No central sorting centers and direct delivery within a radius of 25-30 km from the fulfillment center



Regional Izihubs collect packages from local relations

No restrictions for packages (also odd-sized/"ugly") due to flexible and manual sorting

Delivery by regional Izihubs

Strong regional partners ensure a national agile network

PARTNERSHIP OPPORTUNITIES



Communication

Short communication lines

Customer service hotline
for NL/BE deliveries

Global partner management



Tailor-made

Possibility to create and
implement special services
for our customers



Knowledge

First- & last mile delivery
services in colab with
Burger Warehousing

Our own IT-specialists for
developing API's/quick
fixes



Efficiency

Efficient supply/delivery/
pick-up in and around rural
areas